

# HEADQUARTERS WEST LTD.

PHOENIX - TUCSON - SONOITA - COTTONWOOD - ST. JOHNS

Crown C Ranch - Santa Cruz County, Arizona



Offered for sale exclusively by:

## **Walter Lane**

Headquarters West, Ltd.  
PO BOX 37018  
Tucson, AZ 85740  
Phone (520) 792-2652  
[info@headquarterswest.com](mailto:info@headquarterswest.com)  
[www.headquarterswest.com](http://www.headquarterswest.com)

---

*Disclaimer: This information was obtained from sources deemed to be reliable but is not guaranteed by the Broker. Prospective buyers should check all the facts to their satisfaction. The property is subject to prior sale, price change, or withdrawal.*

# HEADQUARTERS WEST LTD.

PHOENIX - TUCSON - SONOITA - COTTONWOOD - ST. JOHNS

Crown C Ranch - Santa Cruz County, Arizona

## General Area Description

The Crown C Ranch is located in southeastern Arizona approximately 50 miles south of Tucson. The property is approximately 3 miles southwest of Sonoita on Highway 82 and is accessed via Crown C Ranch Road.

This property lies in the scenic Sonoita area. This beautiful region offers quiet rural living with a variety of outdoor activities such as hiking, birding and horse-back riding. The immediate area features numerous local vineyards and the Santa Cruz County Fairgrounds with its festivals and equine events throughout the year.

Tucson, an easy 45 minutes away, offers major medical facilities, the University of Arizona, shopping, restaurants, an international airport and all of the other features of a major metropolitan area.

## History

The Crown C Ranch has a colorful history. The property is the site of Camp Crittenden, a Cavalry post established in August 10, 1867 to protect settlements in the Babacomari, Sonoita and Santa Cruz Valleys. Lieutenant H. B. Cushing, leading troops from Camp Crittenden, was killed nearby in a skirmish with Apaches on May 5, 1871. The Camp was abandoned on June 1, 1873 after it was decided to move the troops to another post. The ruins of this Camp can still be seen in the southwest portion of the property.

The Crown C Ranch was subsequently owned as portions of larger ranches by several different pioneer ranching families including the Vail and Boice families. Blake Carrington purchased the Crown C Ranch in the 1930's. Mr. Carrington built the existing main home and other improvements shortly after he purchased the ranch. The current owners acquired the Crown C Ranch in the late 1970's. Since that time the Crown C Ranch has been operated as a working cattle and guest ranch.

## Land Tenure

The Crown C Ranch consists of the following:

Deeded Land	485.34 approximate acres
Forest Allotment (Apache Springs)	13,066.90 approximate acres
Forest Allotment (Fort)	<u>7,130.00</u> approximate acres
Total	20,682.24 approximate acres

## Livestock Grazing

The Ranch will graze approximately 280 cattle annually. The Forest Allotments are rated for 200 cattle annually. The remaining 80 head are grazed on the Deeded land and adjacent private grazing leases.

---

*Disclaimer: This information was obtained from sources deemed to be reliable but is not guaranteed by the Broker. Prospective buyers should check all the facts to their satisfaction. The property is subject to prior sale, price change, or withdrawal.*

# HEADQUARTERS WEST LTD.

PHOENIX - TUCSON - SONOITA - COTTONWOOD - ST. JOHNS

Crown C Ranch - Santa Cruz County, Arizona

## Building Improvements

The Crown C Ranch has some exceptional and carefully constructed improvements:

- **Main House-** A historic owner's home of approximately 6,100 square foot. Constructed in 1937 out of native adobe block it has 9 bedrooms, 6 bathrooms, dining room, living room, guest wing, numerous sitting areas and three large screened porches. The architecture and layout are very unique and the home has been carefully maintained over the years. It is situated to maximize the beautiful views in several directions.
- **Swimming Pool-** Adjacent to the main house.
- **Labor House-** Approximately 1,600 square foot with 2 Bedrooms and 1 Bathroom. It was also constructed in 1937.
- **Adobe Barn-** Beautifully constructed with exposed native adobe block, it consists of approximately 1,400 square feet with 2 tack rooms, 1 feed room and shop.
- **Hay Barn-** Approximately 600 square foot covered metal shed.
- **Livestock Corrals-** Situated in close proximity to the Adobe Barn.

## Climate, Elevation and Vegetation

This area has a mild climate with Summer highs in the mid 90's and Winter lows in the mid 30's. Precipitation averages 15 inches per year. The elevation varies from 4,800 feet on the Deeded land to 8,400 feet above sea level on the Forest. The topography of the Deeded land consists of low rolling ridges with open valleys on a north to south alignment. The Forest Allotment is more mountainous. The vegetation is a Madrean Oak Grassland consisting of numerous native perennial grasses with scattered oak and mesquite trees.

## Water

The Ranch has three wells ranging in depth from 140 to 225 feet. There is one dirt stock tank on the Deeded parcel. The Forest Allotments are well watered by springs, dirt stock tanks, a water pipeline and some seasonal live water.

## Utilities

The Ranch has electricity provided by Sulphur Springs Valley Electric Cooperative. Telephone & internet service are available. Water is provided by private well. Sewer service is provided by septic tank. Propane is delivered by local providers.

# HEADQUARTERS WEST LTD.

PHOENIX - TUCSON - SONOITA - COTTONWOOD - ST. JOHNS

Crown C Ranch - Santa Cruz County, Arizona

## Zoning and Deed Restrictions

The property is zoned Santa Cruz County GR (General Rural). This zoning provides for low density residential and agricultural uses. Portions of the Deeded land and the adjacent surrounding properties are subject to deed restrictions that limit further subdivision to one house per fifty acres. There are additional restrictions on building design and type to protect the scenic beauty and rural nature of the area.

## Real Estate Taxes and Grazing Fees

Real Estate Taxes (2017)	\$ 8,796.52
Forest Grazing Fees (2018)	<u>3,384.00</u>
Total	\$12,180.52

## Remarks

The Crown C Ranch is an exceptionally beautiful property that lends itself to several uses including: exclusive guest ranch operation, corporate/religious retreat or a very secluded private hideaway. The scenic beauty of this property, its privacy from today's busy world and the unique historic buildings combine to create a one of a kind opportunity.

This property is one of the last large land parcels available in the immediate Sonoita area. The surrounding properties have been carefully deed restricted to insure that future development is tasteful and in harmony with the landscape and adjoining properties. This is a unique opportunity to acquire a beautiful property that enjoys a very quiet rural lifestyle within close proximity of Tucson.

There is an additional 133 acres adjacent to the north boundary of the Deeded land that is available for purchase from a separate owner. This property would make a nice addition to the Crown C Ranch.

## Price

\$4,900,000

*Shown by appointment only*

# HEADQUARTERS WEST LTD.

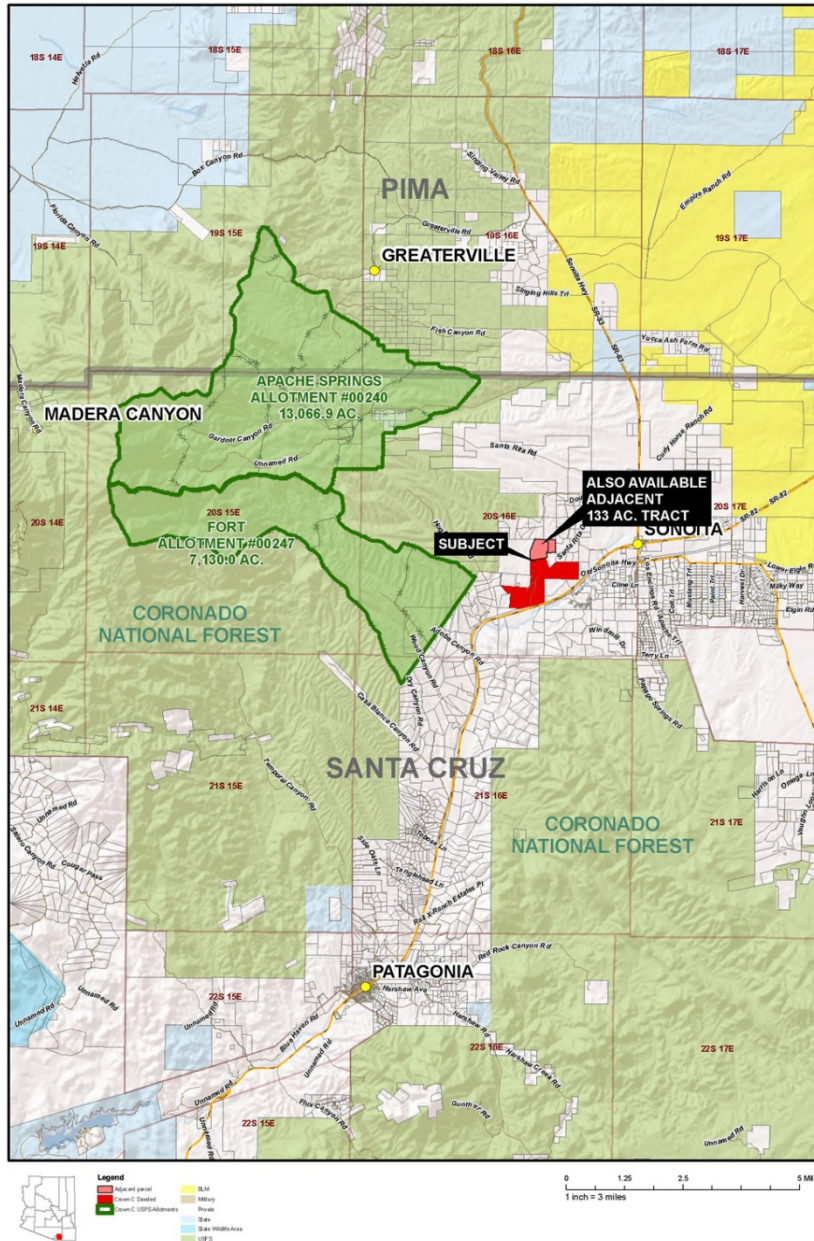
PHOENIX - TUCSON - SONOITA - COTTONWOOD - ST. JOHNS

Crown C Ranch - Santa Cruz County, Arizona

See Also

Adjacent 133 acre tract - \$795,000, also being handled by Walter Lane.

[www.headquarterswest.com/listings/sonoita\\_133](http://www.headquarterswest.com/listings/sonoita_133)



*Disclaimer: This information was obtained from sources deemed to be reliable but is not guaranteed by the Broker. Prospective buyers should check all the facts to their satisfaction. The property is subject to prior sale, price change, or withdrawal.*

# HEADQUARTERS WEST LTD.

PHOENIX - TUCSON - SONOITA - COTTONWOOD - ST. JOHNS

Crown C Ranch - Santa Cruz County, Arizona

## Photographs



View to the West



View of the Santa Rita Mountains

---

*Disclaimer: This information was obtained from sources deemed to be reliable but is not guaranteed by the Broker. Prospective buyers should check all the facts to their satisfaction. The property is subject to prior sale, price change, or withdrawal.*

# HEADQUARTERS WEST LTD.

PHOENIX - TUCSON - SONOITA - COTTONWOOD - ST. JOHNS

Crown C Ranch - Santa Cruz County, Arizona



Screened porch



Rolling ridges

---

*Disclaimer: This information was obtained from sources deemed to be reliable but is not guaranteed by the Broker. Prospective buyers should check all the facts to their satisfaction. The property is subject to prior sale, price change, or withdrawal.*

# HEADQUARTERS WEST LTD.

PHOENIX - TUCSON - SONOITA - COTTONWOOD - ST. JOHNS

Crown C Ranch - Santa Cruz County, Arizona



Owner's home



Pillar falls

---

*Disclaimer: This information was obtained from sources deemed to be reliable but is not guaranteed by the Broker. Prospective buyers should check all the facts to their satisfaction. The property is subject to prior sale, price change, or withdrawal.*



# HEADQUARTERS WEST LTD.

PHOENIX - TUCSON - SONOITA - COTTONWOOD - ST. JOHNS

Crown C Ranch - Santa Cruz County, Arizona



Oak groves



Living room

---

*Disclaimer: This information was obtained from sources deemed to be reliable but is not guaranteed by the Broker. Prospective buyers should check all the facts to their satisfaction. The property is subject to prior sale, price change, or withdrawal.*

# HEADQUARTERS WEST LTD.

PHOENIX - TUCSON - SONOITA - COTTONWOOD - ST. JOHNS

Crown C Ranch - Santa Cruz County, Arizona



Lush pastures



Guest wing

---

*Disclaimer: This information was obtained from sources deemed to be reliable but is not guaranteed by the Broker. Prospective buyers should check all the facts to their satisfaction. The property is subject to prior sale, price change, or withdrawal.*

# HEADQUARTERS WEST LTD.

PHOENIX - TUCSON - SONOITA - COTTONWOOD - ST. JOHNS

Crown C Ranch - Santa Cruz County, Arizona



Dining room



Guest wing courtyard

---

*Disclaimer: This information was obtained from sources deemed to be reliable but is not guaranteed by the Broker. Prospective buyers should check all the facts to their satisfaction. The property is subject to prior sale, price change, or withdrawal.*

# HEADQUARTERS WEST LTD.

PHOENIX - TUCSON - SONOITA - COTTONWOOD - ST. JOHNS

Crown C Ranch - Santa Cruz County, Arizona



Corrals



Camp Crittenden Ruins

---

*Disclaimer: This information was obtained from sources deemed to be reliable but is not guaranteed by the Broker. Prospective buyers should check all the facts to their satisfaction. The property is subject to prior sale, price change, or withdrawal.*

# HEADQUARTERS WEST LTD.

PHOENIX - TUCSON - SONOITA - COTTONWOOD - ST. JOHNS

Crown C Ranch - Santa Cruz County, Arizona



Living room



Guest wing courtyard

---

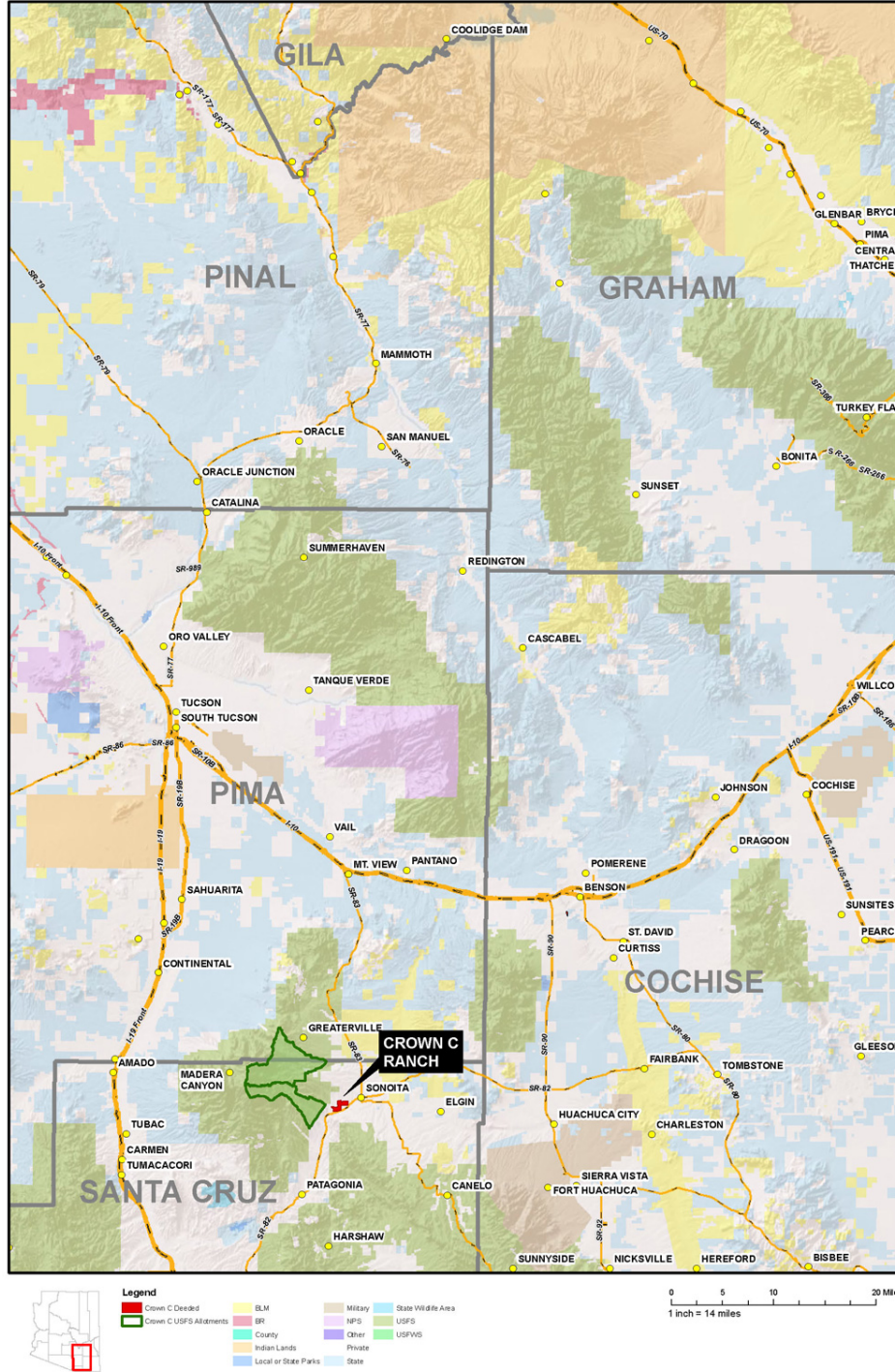
*Disclaimer: This information was obtained from sources deemed to be reliable but is not guaranteed by the Broker. Prospective buyers should check all the facts to their satisfaction. The property is subject to prior sale, price change, or withdrawal.*

# HEADQUARTERS WEST LTD.

PHOENIX - TUCSON - SONOITA - COTTONWOOD - ST. JOHNS

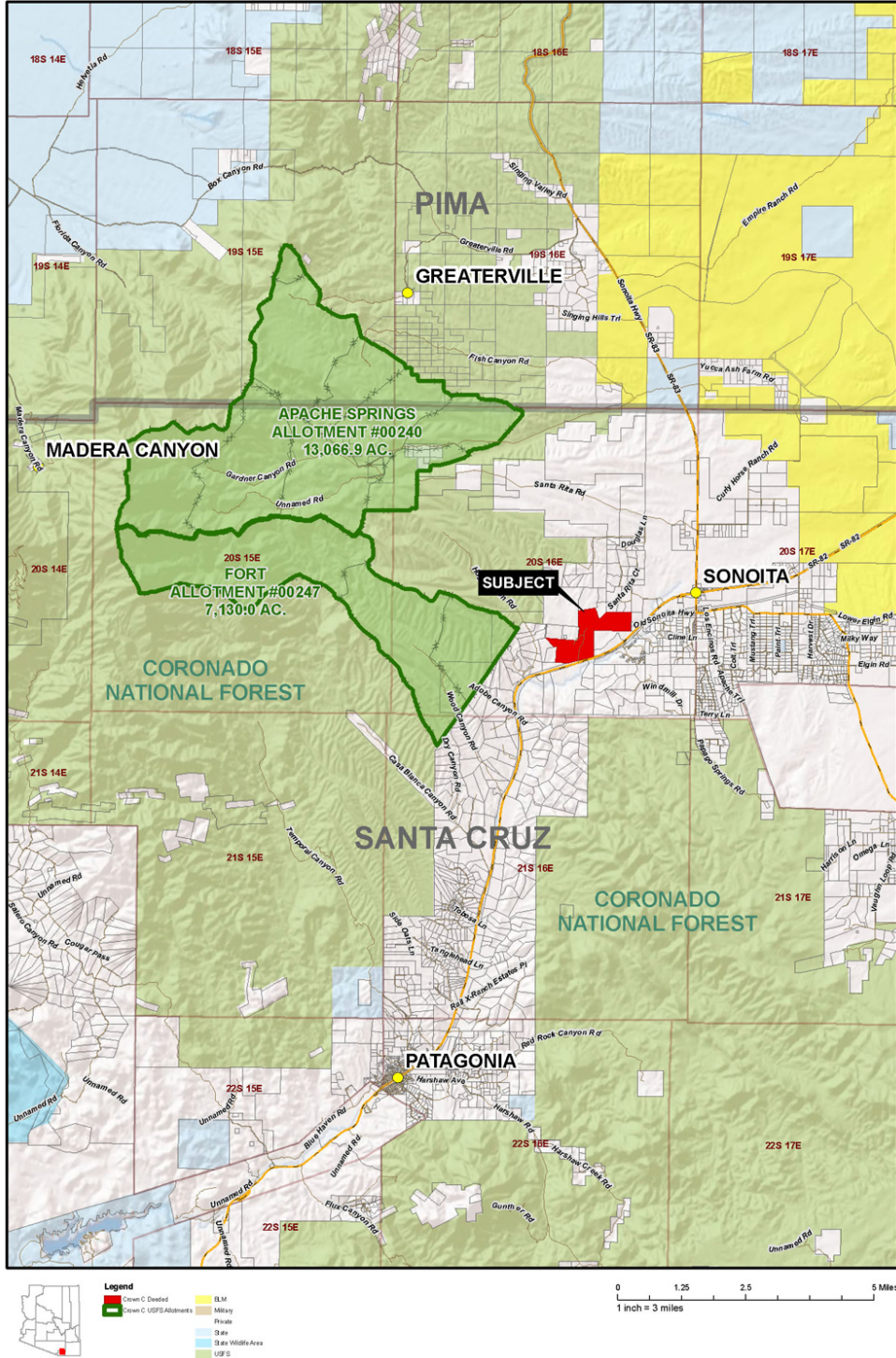
Crown C Ranch - Santa Cruz County, Arizona

## Location Map



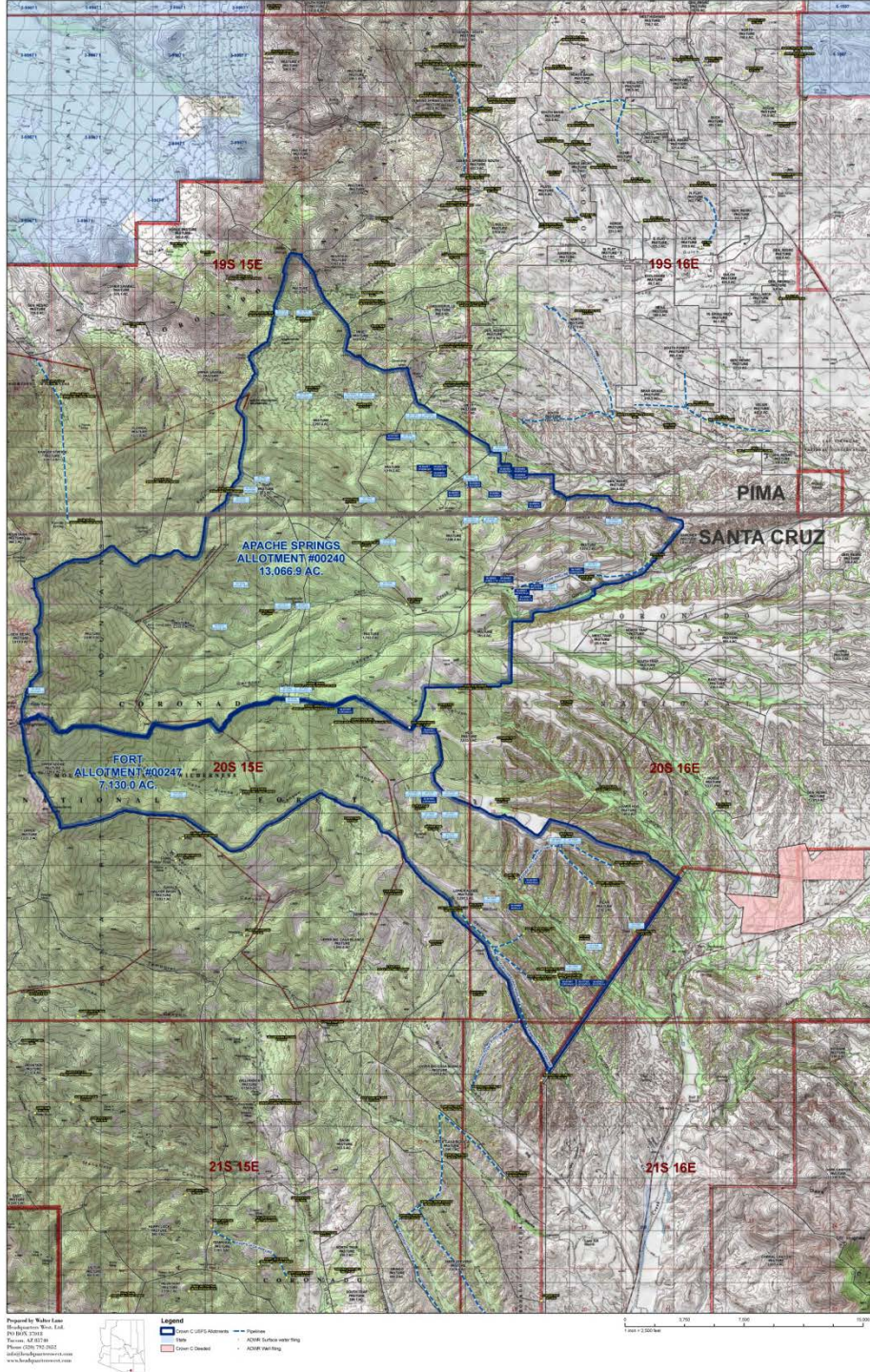
*Disclaimer: This information was obtained from sources deemed to be reliable but is not guaranteed by the Broker. Prospective buyers should check all the facts to their satisfaction. The property is subject to prior sale, price change, or withdrawal.*

**Neighborhood Map**



*Disclaimer: This information was obtained from sources deemed to be reliable but is not guaranteed by the Broker. Prospective buyers should check all the facts to their satisfaction. The property is subject to prior sale, price change, or withdrawal.*

## Topography Map



*Disclaimer: This information was obtained from sources deemed to be reliable but is not guaranteed by the Broker. Prospective buyers should check all the facts to their satisfaction. The property is subject to prior sale, price change, or withdrawal.*

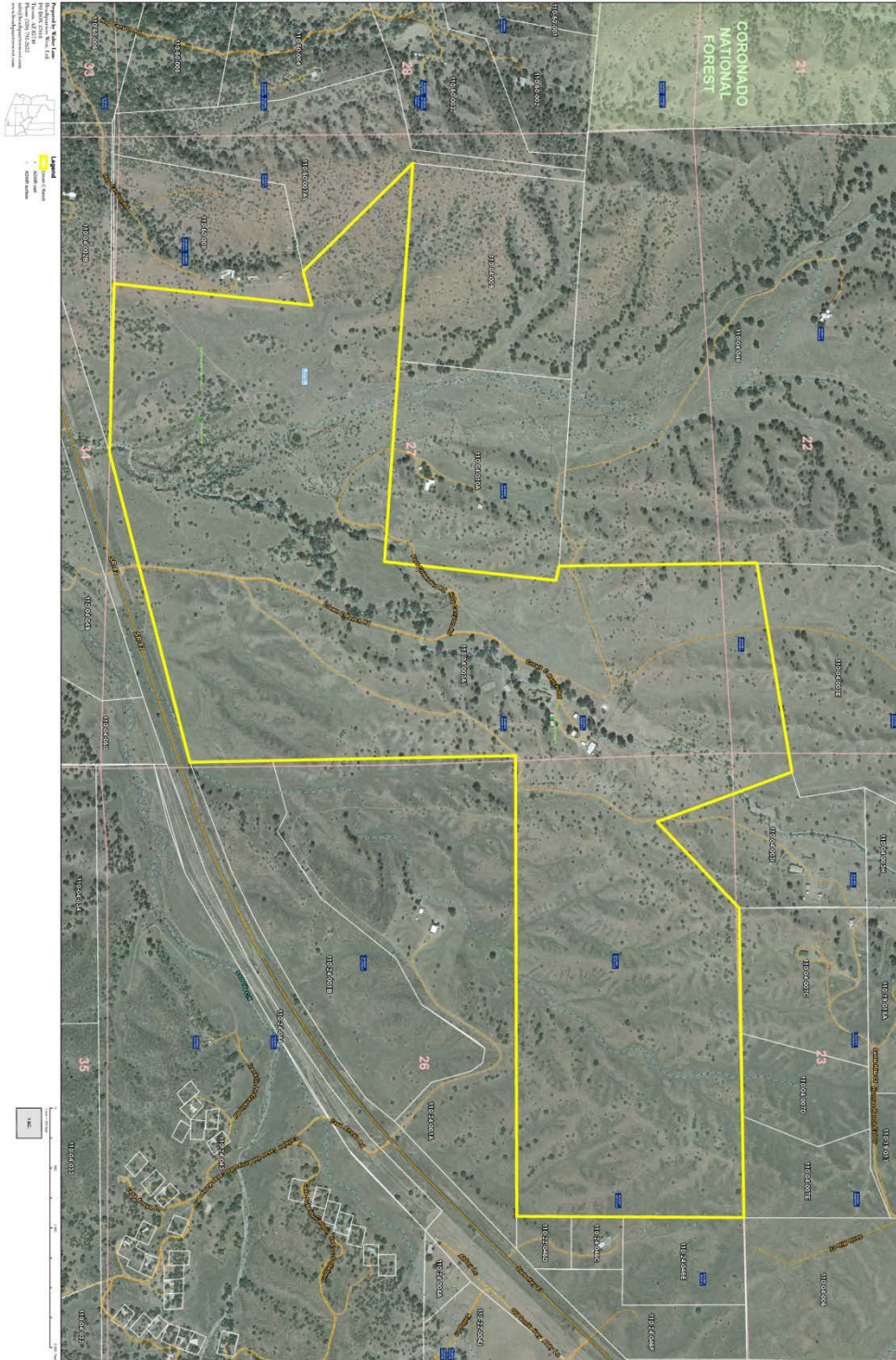


# HEADQUARTERS WEST LTD.

PHOENIX - TUCSON - SONOITA - COTTONWOOD - ST. JOHNS

Crown C Ranch - Santa Cruz County, Arizona

## Aerial Map



*Disclaimer: This information was obtained from sources deemed to be reliable but is not guaranteed by the Broker. Prospective buyers should check all the facts to their satisfaction. The property is subject to prior sale, price change, or withdrawal.*