

HEADQUARTERS WEST LTD.

PHOENIX - TUCSON - SONOITA - COTTONWOOD - ST. JOHNS

Patagonia Mining Claim - 120 Acres - Santa Cruz County, Arizona



Offered for sale exclusively by:

Sam Hubbell

Headquarters West, Ltd.
PO BOX 1039
Sonoita, AZ 85637
Phone: (520) 609-2546, Fax: (520) 455-5018
info@headquarterswest.com
www.headquarterswest.com

Disclaimer: This information was obtained from sources deemed to be reliable but is not guaranteed by the Broker. Prospective buyers should check all the facts to their satisfaction. The property is subject to prior sale, price change, or withdrawal.

HEADQUARTERS WEST LTD.

PHOENIX - TUCSON - SONOITA - COTTONWOOD - ST. JOHNS

Patagonia Mining Claim - 120 Acres - Santa Cruz County, Arizona

Location

Roughly two miles northwest of Patagonia, Arizona and 66 miles southeast of Tucson, Arizona. The property is nestled in the beautiful foothills of the Santa Rita Mountains and is adjacent to the Coronado National Forest.

Weather

Summers and winters are comparatively mild, temperatures vary from a daily maximum mean of approximately 58 degrees during the month of January to a daily maximum mean of approximately 88 degrees during the month of July. Annual rainfall averages about 17 inches.

Wildlife

Wildlife include mule deer, white tail deer, bobcat, mountain lion, javelina, coyote, fox, badger, and squirrels. Quail and a wide variety of birds and other small game reside here.

Comments

If you are looking for seclusion, this is the place for you with 120 acres with views in all directions. The small picturesque town of Patagonia is located just south of the ranch offers public schools with education from kindergarten through high school. Nogales International Airport is about fifteen miles from the ranch, and Tucson International Airport is just a little over an hour's drive.

Price

\$120,000

Disclaimer: This information was obtained from sources deemed to be reliable but is not guaranteed by the Broker. Prospective buyers should check all the facts to their satisfaction. The property is subject to prior sale, price change, or withdrawal.

HEADQUARTERS WEST LTD.

PHOENIX - TUCSON - SONOITA - COTTONWOOD - ST. JOHNS

Patagonia Mining Claim - 120 Acres - Santa Cruz County, Arizona



Disclaimer: This information was obtained from sources deemed to be reliable but is not guaranteed by the Broker. Prospective buyers should check all the facts to their satisfaction. The property is subject to prior sale, price change, or withdrawal.

HEADQUARTERS WEST LTD.

PHOENIX - TUCSON - SONOITA - COTTONWOOD - ST. JOHNS

Patagonia Mining Claim - 120 Acres - Santa Cruz County, Arizona



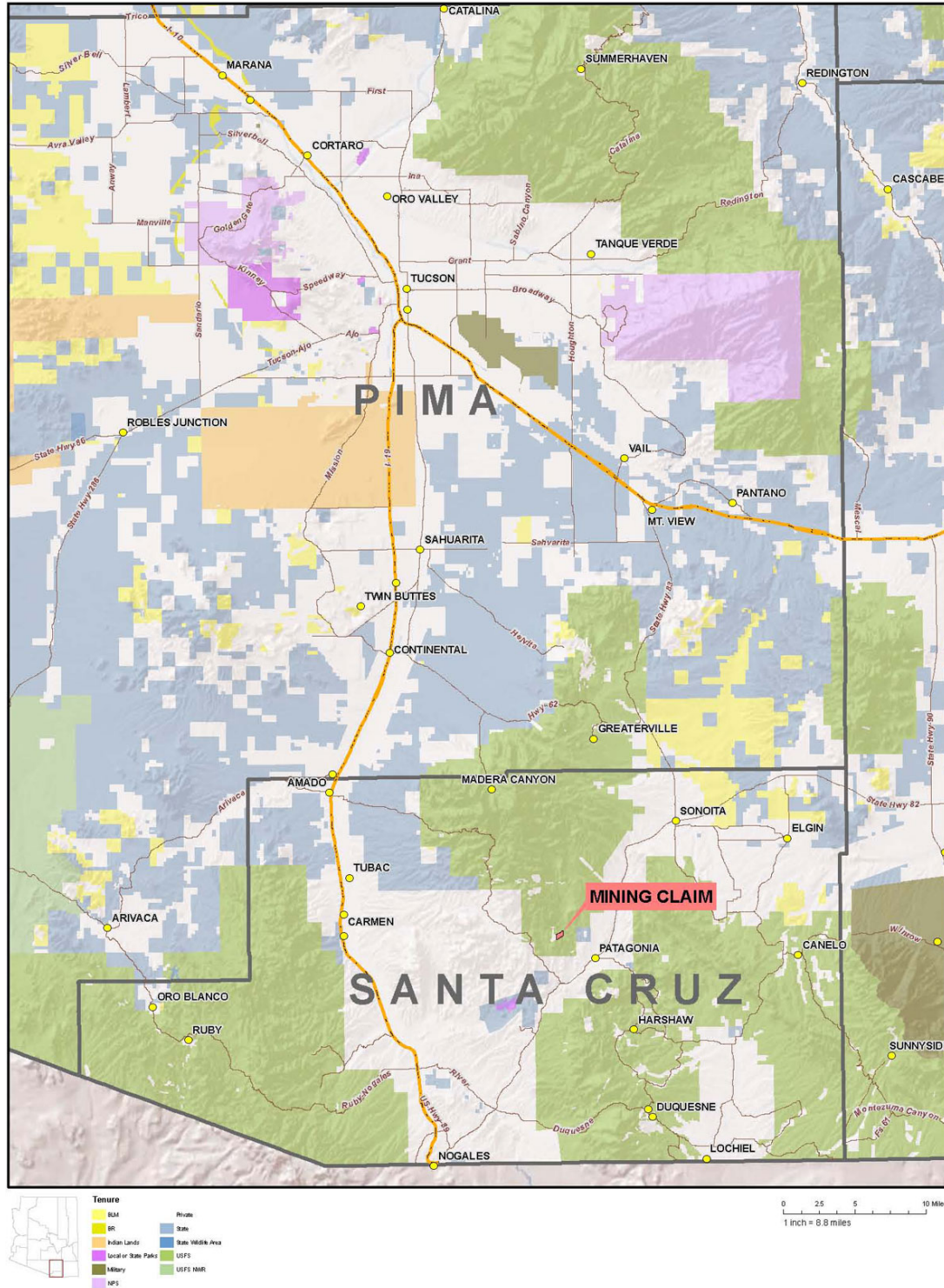
Disclaimer: This information was obtained from sources deemed to be reliable but is not guaranteed by the Broker. Prospective buyers should check all the facts to their satisfaction. The property is subject to prior sale, price change, or withdrawal.

HEADQUARTERS WEST LTD.

PHOENIX - TUCSON - SONOITA - COTTONWOOD - ST. JOHNS

Patagonia Mining Claim - 120 Acres - Santa Cruz County, Arizona

Location Map



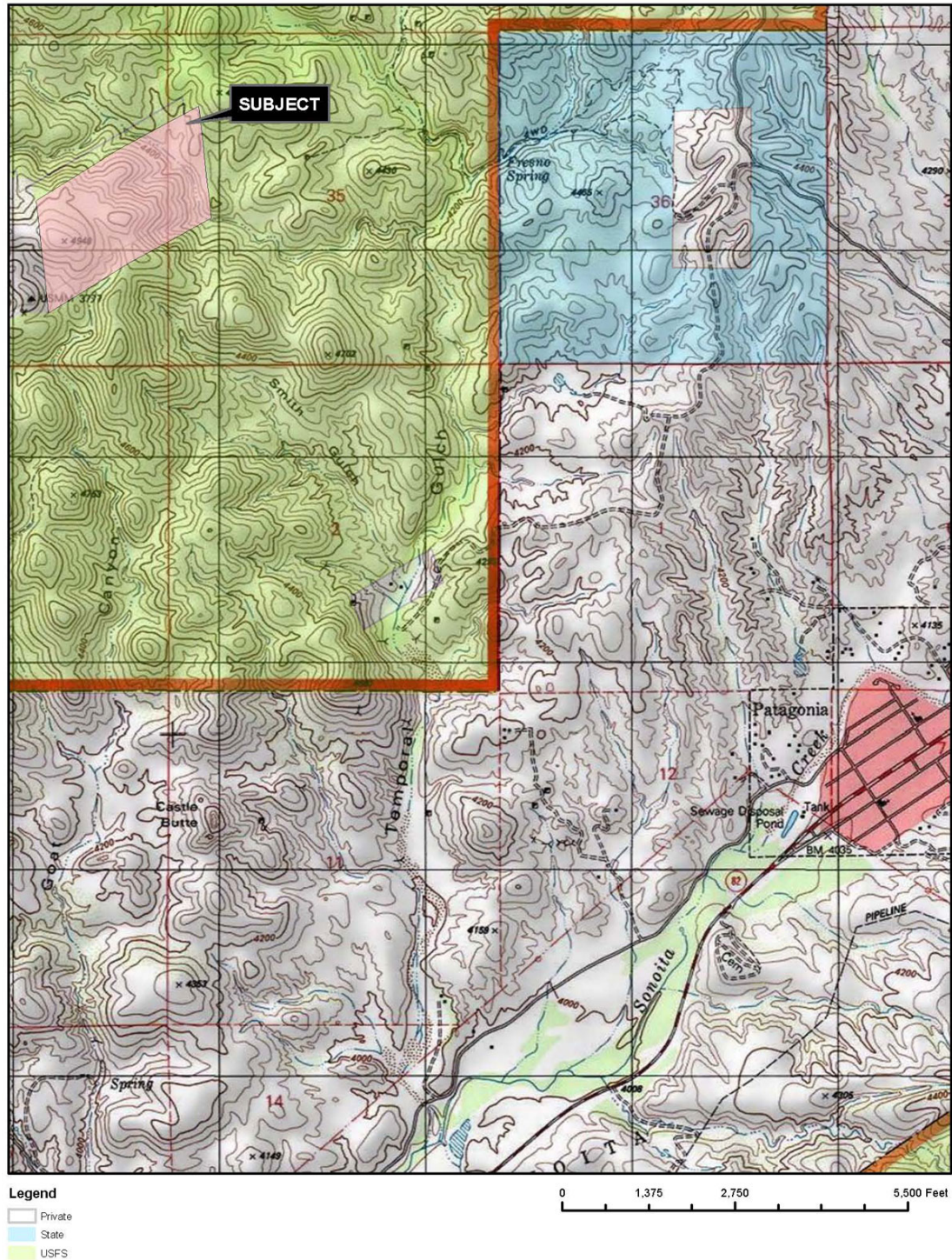
Disclaimer: This information was obtained from sources deemed to be reliable but is not guaranteed by the Broker. Prospective buyers should check all the facts to their satisfaction. The property is subject to prior sale, price change, or withdrawal.

HEADQUARTERS WEST LTD.

PHOENIX - TUCSON - SONOITA - COTTONWOOD - ST. JOHNS

Patagonia Mining Claim - 120 Acres - Santa Cruz County, Arizona

Topography/Tenure Map



Disclaimer: This information was obtained from sources deemed to be reliable but is not guaranteed by the Broker. Prospective buyers should check all the facts to their satisfaction. The property is subject to prior sale, price change, or withdrawal.

HEADQUARTERS WEST LTD.

PHOENIX - TUCSON - SONOITA - COTTONWOOD - ST. JOHNS

Patagonia Mining Claim - 120 Acres - Santa Cruz County, Arizona

Aerial Map



Disclaimer: This information was obtained from sources deemed to be reliable but is not guaranteed by the Broker. Prospective buyers should check all the facts to their satisfaction. The property is subject to prior sale, price change, or withdrawal.