

HEADQUARTERS WEST LTD.

PHOENIX - TUCSON - SONOITA - COTTONWOOD - ST. JOHNS

Artesia Farm - 150+/- Acres - Dona Ana County, New Mexico



Offered for sale exclusively by:

Sam Hubbell

Headquarters West, Ltd.
PO BOX 1039
Sonoita, AZ 85637
Phone: (520) 609-2546, Fax: (520) 455-5018
info@headquarterswest.com
www.headquarterswest.com

Disclaimer: This information was obtained from sources deemed to be reliable but is not guaranteed by the Broker. Prospective buyers should check all the facts to their satisfaction. The property is subject to prior sale, price change, or withdrawal.

HEADQUARTERS WEST LTD.

PHOENIX - TUCSON - SONOITA - COTTONWOOD - ST. JOHNS

Artesia Farm - 150+/- Acres - Dona Ana County, New Mexico

Location

Rincon, N.M. - Dona Ana County.

Size

- 150 +/- total deeded
- 134 Irrigated (24 acres Pecans, 110 acres alfalfa)

Water Rights

- 1950 Priority Ground Water Right for 65 acre feet
- 1906 Priority Surface Water Right for 72 acre feet

Wells

- 1 irrigation - 80 ft. depth, 400 gpm (has domestic pump inside)
- 1 irrigation - Surface water, 2,000 gpm (pumps out of Rio Grande River)
- 1 irrigation -80 ft depth, 1,800-2,000 gpm

Improvements

- Ranch home - 1,618sqft
- Shop/Tool Shed
- Various outbuildings

Private Leases

.5 acre 28x60 Shop Lease

Price

\$1,700,000

Disclaimer: This information was obtained from sources deemed to be reliable but is not guaranteed by the Broker. Prospective buyers should check all the facts to their satisfaction. The property is subject to prior sale, price change, or withdrawal.

HEADQUARTERS WEST LTD.

PHOENIX - TUCSON - SONORA - COTTONWOOD - ST. JOHNS

Artesia Farm - 150+/- Acres - Dona Ana County, New Mexico

Photos



Disclaimer: This information was obtained from sources deemed to be reliable but is not guaranteed by the Broker. Prospective buyers should check all the facts to their satisfaction. The property is subject to prior sale, price change, or withdrawal.

HEADQUARTERS WEST LTD.

PHOENIX - TUCSON - SONORA - COTTONWOOD - ST. JOHNS

Artesia Farm - 150+/- Acres - Dona Ana County, New Mexico

Photos (continued)



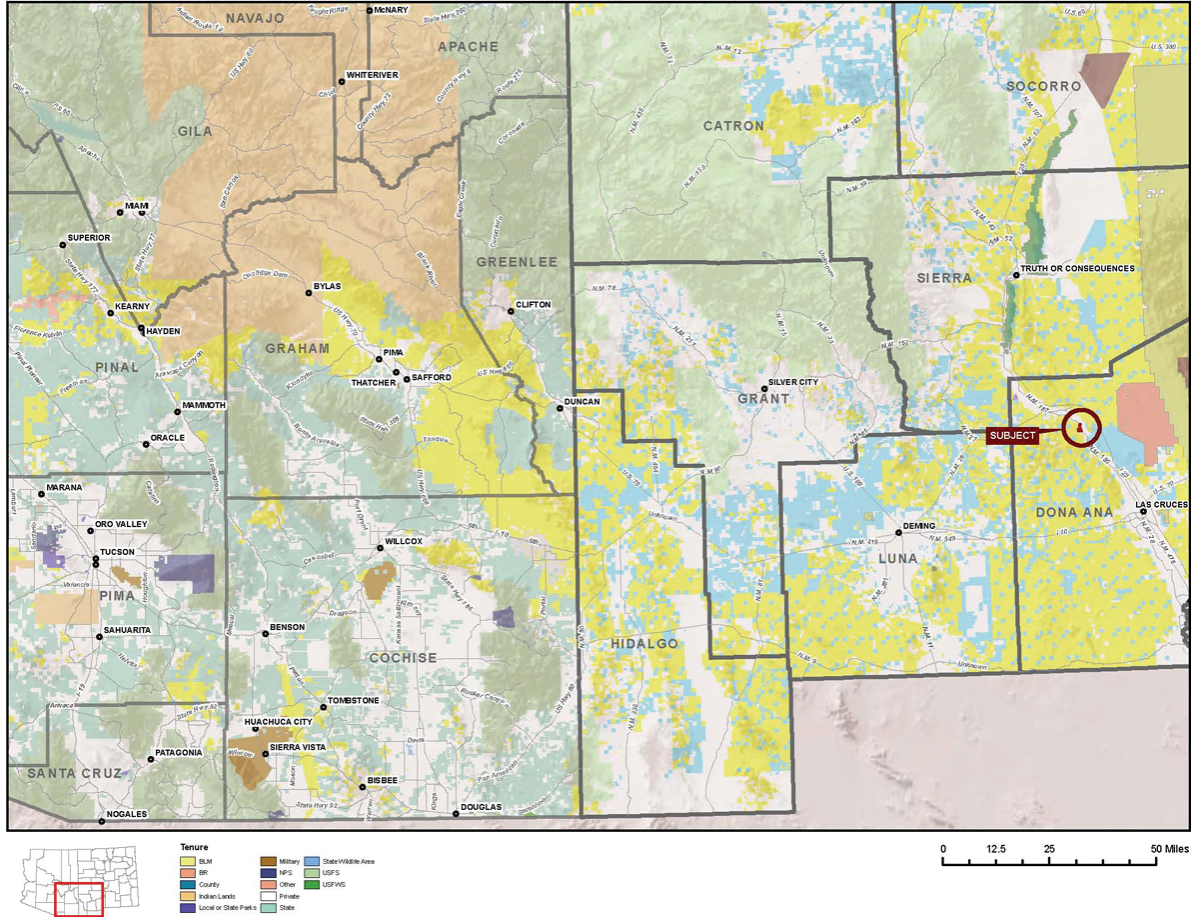
Disclaimer: This information was obtained from sources deemed to be reliable but is not guaranteed by the Broker. Prospective buyers should check all the facts to their satisfaction. The property is subject to prior sale, price change, or withdrawal.

HEADQUARTERS WEST LTD.

PHOENIX - TUCSON - SONOITA - COTTONWOOD - ST. JOHNS

Artesia Farm - 150+/- Acres - Dona Ana County, New Mexico

Location Map



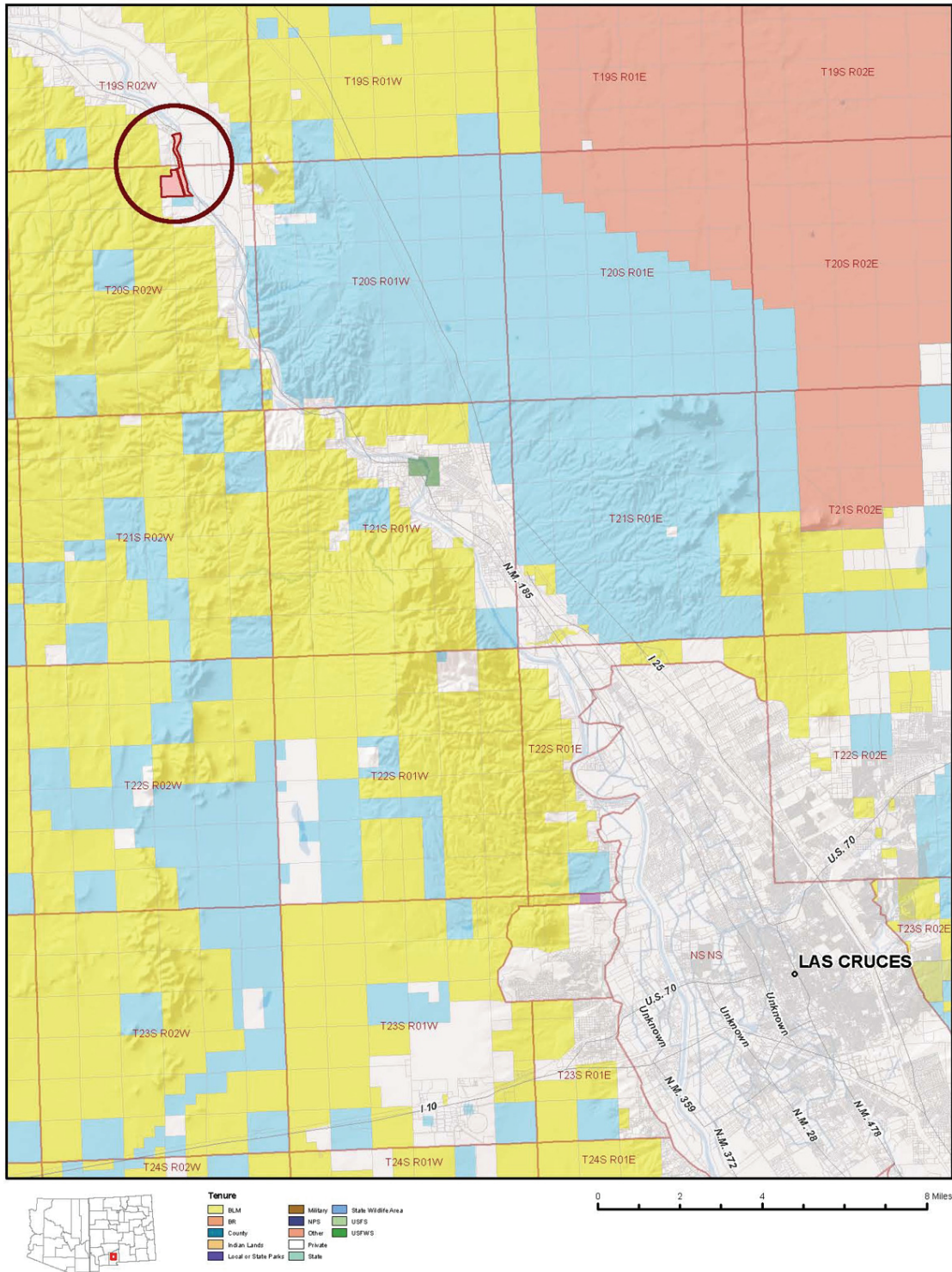
Disclaimer: This information was obtained from sources deemed to be reliable but is not guaranteed by the Broker. Prospective buyers should check all the facts to their satisfaction. The property is subject to prior sale, price change, or withdrawal.

HEADQUARTERS WEST LTD.

PHOENIX - TUCSON - SONOITA - COTTONWOOD - ST. JOHNS

Artesia Farm - 150+/- Acres - Dona Ana County, New Mexico

Neighborhood Map



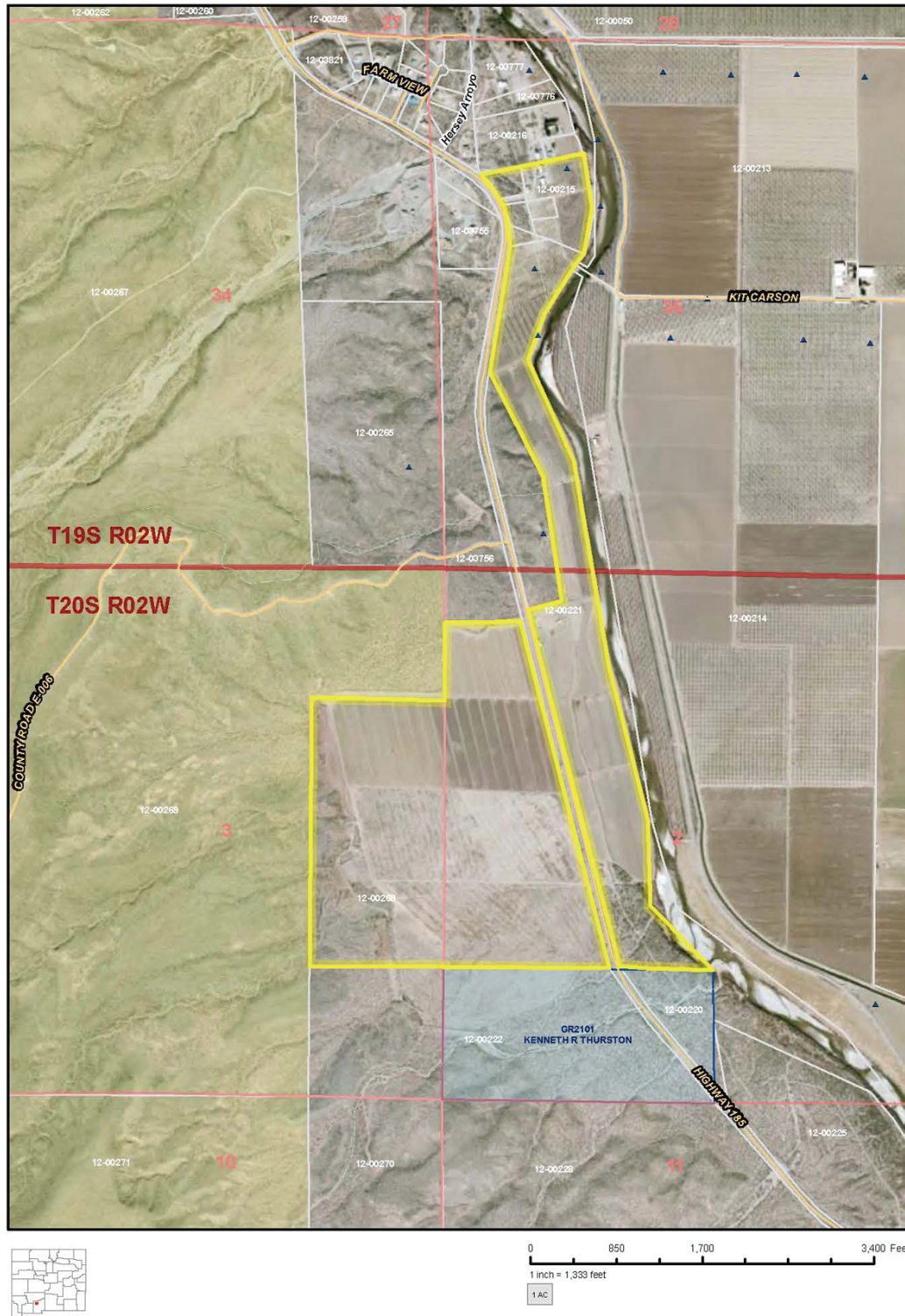
Disclaimer: This information was obtained from sources deemed to be reliable but is not guaranteed by the Broker. Prospective buyers should check all the facts to their satisfaction. The property is subject to prior sale, price change, or withdrawal.

HEADQUARTERS WEST LTD.

PHOENIX - TUCSON - SONOITA - COTTONWOOD - ST. JOHNS

Artesia Farm - 150+/- Acres - Dona Ana County, New Mexico

Aerial Map



Disclaimer: This information was obtained from sources deemed to be reliable but is not guaranteed by the Broker. Prospective buyers should check all the facts to their satisfaction. The property is subject to prior sale, price change, or withdrawal.